

Embryo Packages



AHA #44167080
DOB: 2/19/2020
POLLED
 UPS SENSATION 2296 ET
H DEBERARD 7454 ET
 RST GAT NST Y79D LADY 54B ET
 JDH VICTOR 719T 33Z ET
JDH AH MS 34X VICTOR 33Z45C ET
 AH JDH MS 25L WRANGLER 34X ET

BW	WW	YW	MM	REA	MARB	CHB
6.8	73	118	34	0.79	0.09	\$131

LOT 1

JDH AH 45C LADY DEB 87H ET

.. *Elegant and powerful. Elite quality.*



AHA #44146416
DOB: 2/14/2020
POLLED
 JDH VICTOR 719T 33Z ET
AH JDH MUNSON 15E ET
 AH JDH MS 25L WRANGLER 34X ET
 UPS SENSATION 2296 ET
PERKS S&J FG SENSATION 7071 ET
 PERKS 144U SHES A DARLING 2004

BW	WW	YW	MM	REA	MARB	CHB
-2.0	48	71	34	0.35	0.30	\$104

LOT 5

AH MMC SENSATIONAL LADY 002H

.. *Eye catching Munson daughter who has been a favorite of many visitors.*



NJW 79Z Z311 ENDURE 173D ET



JDH AH MS 34X VICTOR 33Z45C ET

FOUR FROZEN EMBRYOS

LOT 9

Sire: **NJW 79Z Z311 ENDURE 173D ET**
 X
 Dam: **JDH AH MS 34X VICTOR 33Z45C ET**

.. *Four grade 1 IVF embryos.*

.. *45C is one of the most powerful donors in the breed and here is a chance to buy her offspring sired by the popular Endure. Think of the opportunity in these embryos to produce herd bulls or foundation females with outstanding phenotype and breed leading EPD's!*



AHA #44148778
DOB: 1/21/2020
POLLED
 C DOUBLE YOUR MILES 6077 ET
JDH AH MILES AHEAD 35F ET
 JDH AH MS 34X VICTOR 33Z45C ET
 JDH AH 719T 3Y ET
JDH MS 21Z VICTOR 3Y 11B
 JDH MS DURANGO 4037 21Z

BW	WW	YW	MM	REA	MARB	CHB
4.3	67	98	28	0.68	0.09	\$120

LOT 2

JDH 11B 35F QUEEN MILES 7H ET

.. *Bold, massive, high capacity donor in the making.*



AHA #44146367
DOB: 2/26/2020
POLLED
 C DOUBLE YOUR MILES 6077 ET
JDH AH MILES AHEAD 35F ET
 JDH AH MS 34X VICTOR 33Z45C ET
 BBH 743 REDWINE 112Y
BBH 112Z BLOSSOM 418B
 BBH 26U ALICE 035X

BW	WW	YW	MM	REA	MARB	CHB
7.1	70	111	34	0.58	-0.16	\$115

LOT 6

AH ALICE 005H

.. *Powerful made daughter of Miles Ahead out of a top producing cow.*



JDH AH STANDOUT 16G ET



AH 719 BELLE 125B

FOUR FROZEN EMBRYOS

LOT 10

Sire: **JDH AH STANDOUT 16G ET**
 X
 Dam: **AH 719 BELLE 125B**

.. *Four grade 1 conventional embryos.*

.. *125B was the first calf from our 19Z donor and is a low BW cow with tremendous udder quality and milk flow. From a great producing cow family this is the first year for 125B in our ET program.*



AHA #44148774
DOB: 1/19/2020
POLLED
 C DOUBLE YOUR MILES 6077 ET
JDH AH MILES AHEAD 35F ET
 JDH AH MS 34X VICTOR 33Z45C ET
 JDH AH 719T 3Y ET
JDH MS 21Z VICTOR 3Y 11B
 JDH MS DURANGO 4037 21Z

BW	WW	YW	MM	REA	MARB	CHB
4.3	67	98	28	0.68	0.09	\$120

LOT 3

JDH 11B 35F QUEEN MILES 5H ET

.. *Striking, next level look and style.*



AHA #44148876
DOB: 1/30/2020
POLLED
 JDH VICTOR 719T 33Z ET
AH JDH MUNSON 15E ET
 AH JDH MS 25L WRANGLER 34X ET
 KJ HVH 33N REDEEM 485T ET
JDH MD MS 0229 REDEEM 54B ET
 ECR 473 DOMINETTE 0229

BW	WW	YW	MM	REA	MARB	CHB
3.0	58	95	26	0.34	0.11	\$110

LOT 7

JDH 54B 15E MISS MUNSON 44H

.. *Function and balance. Fantastic cow prospect.*



JDH AH MILES AHEAD 35F ET



JDH MS 21Z VICTOR 3Y 11B

THREE FROZEN EMBRYOS

LOT 11

Sire: **JDH AH MILES AHEAD 35F ET**
 X
 Dam: **JDH MS 21Z VICTOR 3Y 11B**

.. *Three grade 1 conventional embryos.*

.. *Full sib embryos to Lots 2 and 3, both sexes have been fantastic and will highlight our fall show string!*



AHA #44167074
DOB: 1/24/2020
POLLED
 UPS SENSATION 2296 ET
H MONTGOMERY 7437 ET
 RST GAT NST Y79D LADY 54B ET
 BAR JZ RUMBLE 525X
AH MS 25L RUMBLER 19Z
 AH JDH MS 25L WRANGLER 34X ET

BW	WW	YW	MM	REA	MARB	CHB
1.7	58	93	34	0.64	0.15	\$117

LOT 4

JDH AH QUEEN MONTGOMERY 18H ET

.. *Exciting pedigree, bright future.*



AHA #44148969
DOB: 4/06/2020
POLLED
 NJW 73S M326 TRUST 100W ET
BR TRUST 0217 3373
 BR REVOLUTION OF 8279 0217
 GLENLEES 50S RINGER 68Y
CKP DELLA 4124
 CKP DELLA 0735

BW	WW	YW	MM	REA	MARB	CHB
4.0	68	114	26	0.76	0.07	\$122

LOT 8

JDH 4124 3373 DELLA 126H

.. *Goggle-eyed fancy April show heifer prospect.*

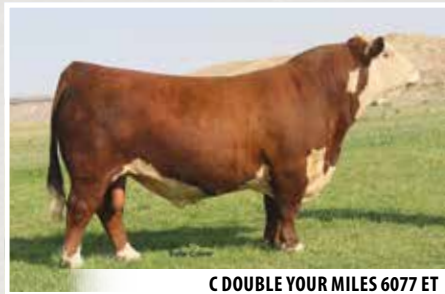
Monday, October 19, 2020

Sale closes race horse style at 7 p.m. (CST)

smartauctions

Sale hosted by [smartauctions.com](https://www.smartauctions.com)

Note: Delaney Herefords/Atkins Herefords retain show rights on all heifers through January 2021. In addition, we retain the right to one flush at the buyers convenience and sellers expense on each of these heifers.



C DOUBLE YOUR MILES 6077 ET



CKP DELLA 4124

THREE FROZEN EMBRYOS LOT 12

Size: C DOUBLE YOUR MILES 6077 ET
X
Dam: CKP DELLA 4124

•• Three grade 1 conventional embryos.

•• Power cow mated to a National Champion. Maternal sibs to Lot 8. 4124 has raised former high sellers on this sale.



H DEBERARD 7454



AH MS 25L RUMBLER 19Z

THREE FROZEN EMBRYOS LOT 13

Size: H DEBERARD 7454
X
Dam: AH MS 25L RUMBLER 19Z

•• Three grade 1 IVF embryos.

•• Stored at Trans Ova in Sioux Center IA. 19Z has produced the pick of the Delaney Carload in the Denver Mile High sale and the lead heifer in the Champion pen of 3 heifers in Denver who sold to Churchill and Green and is now one of their leading donors. Her two daughters in production at Atkins are among our very best cows.



CHURCHILL SHERIFF 900G



JDH AH 45C 63D MS STUD 17G ET

FIVE FROZEN EMBRYOS LOT 14

Size: CHURCHILL SHERIFF 900G
X
Dam: JDH AH 45C 63D MS STUD 17G ET

•• Five grade 1 conventional embryos.

•• Exciting embryos out of a full sister to Prominent Benton and Standout. Sheriff was a highlight on Churchill's bull sale. We put nine of these in our own herd.

Semen

AH JDH CRACKER JACK 26U ET
JDH VICTOR 719T 33Z ET
C DOUBLE YOUR MILES 6077 ET
H BELL RINGER 8459 ET

Delaney HEREFORDS

Jerry & Shelly Delaney Family
2071 County Road 101
Lake Benton, MN 56149

Please Deliver To:

Monday, October 19, 2020

Find photos, videos and sale details on our websites.
Sale closes race horse style at 7 p.m. (CST) on smartauctions.co

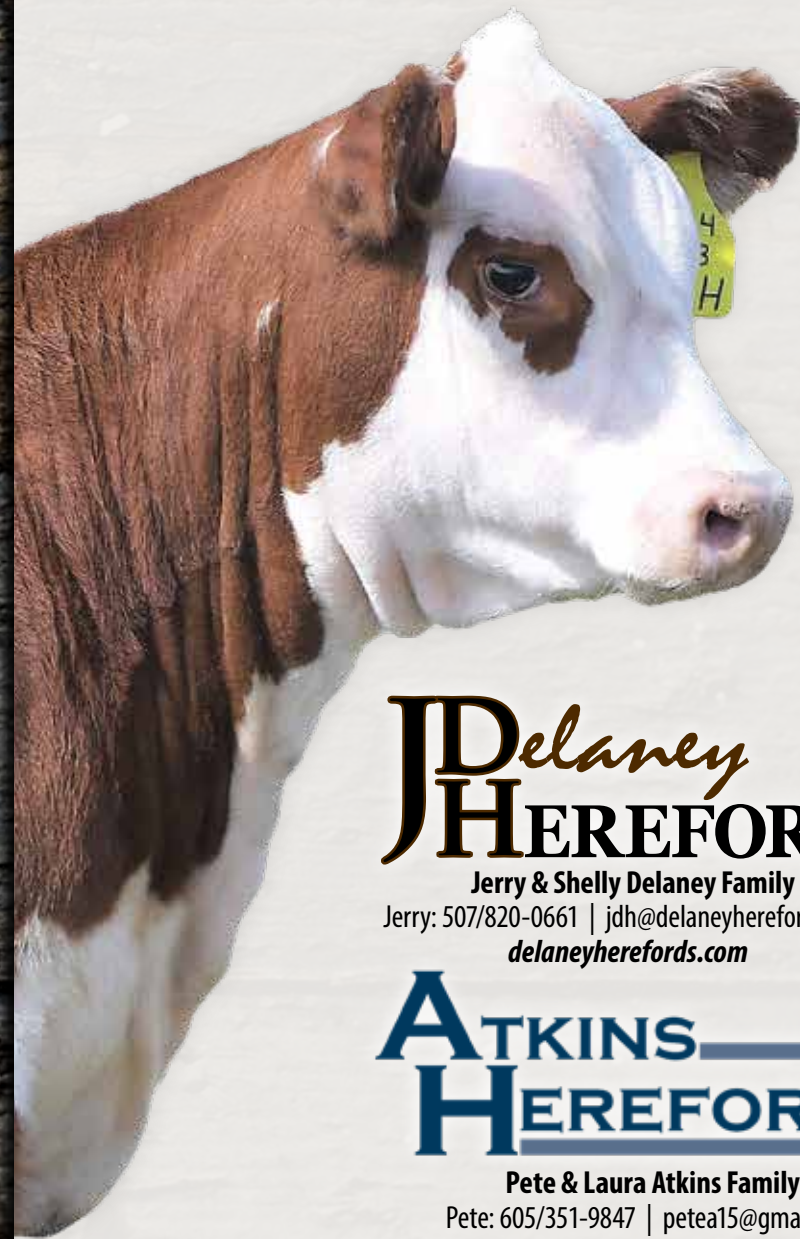
delaneyherefords.com | atkinsherefords.com

Like us on Facebook!
facebook.com/delaneyherefords
facebook.com/atkinsherefords

FIRST CLASS MAIL - TIME DATED MATERIAL!

Genetics Event

HEIFERS • EMBRYOS • SEMEN



Delaney HEREFORDS

Jerry & Shelly Delaney Family
Jerry: 507/820-0661 | jdh@delaneyherefords.com
delaneyherefords.com

ATKINS HEREFORDS

Pete & Laura Atkins Family
Pete: 605/351-9847 | petea15@gmail.com
atkinsherefords.com

Monday, October 19, 2020

Sale closes race horse style at 7 p.m. (CST)

smartauctions

Sale hosted by smartauctions.co

If you have questions about the functionality of the auction or need help placing a bid contact
Chelsea Halderman, SmartAuctions Customer Service at (866) 419-6279 or info@smartauctions.co
Jason Barber, SmartAuctions at (817) 718-5821 or jason@superiorlivestock.com.

PERFORMANCE. PREDICTABILITY. PROOF.